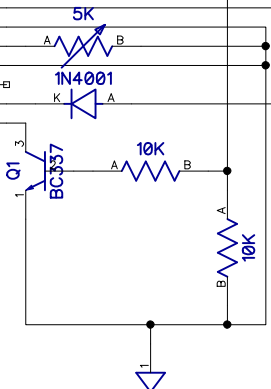


GLCD

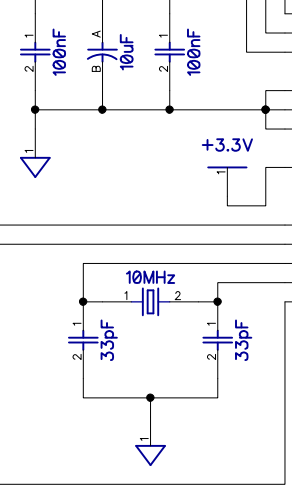
PG320240H-P9

- 1 FLM
- 2 M
- 3 CL1
- 4 CL2
- 5 /D-OFF
- 6 DB0
- 7 DB1
- 8 DB2
- 9 DB3
- 10 Vdd
- 11 Vss
- 12 Adj-H
- 13 Adj-L
- 14 NC/EL-EN
- 15 A
- 16 K



+3.3V +3.3V +3.3V

+5V



dsPIC33FJ128GP802

- 13 Vdd
- 28 Vcap/Vddcore
- 28 AVdd
- 19 Vss
- 8 Vss
- 27 AVss
- 6 /MCLR
- 2 AN0/VREF+/CN2/RA0
- 3 AN1/VREF-/CN3/RA1
- 9 OSC1/CLKI/CN30/RA2
- 10 OSC2/CLKO/CN29/PMA0/RA3
- 12 SOSC0/TICK/CN0/PMA1/RA4
- 4 PGED1/AN2/C2IN-/RP0/CN4/RB0
- 5 PGEC1/AN3/C2IN+/RP1/CN5/RB1
- 6 AN4/C1IN-/RP2/CN6/RB2
- 7 AN5/C1IN+/RP3/CN7/RB3
- 11 SOSC1/RP4/CN1/PMBE/RB4
- 14 PGED3/ASDA1/RP5/CN27/PMD7/RB5
- 15 PGEC3/ASCL1/RP6/CN24/PMD6/RB6
- 16 INT0/RP7/CN23/PMD5/RB7
- 17 TCK/SCL1/RP8/CN22/PMD4/RB8
- 18 TDO/SDA1/RP9/CN21/PMD3/RB9
- 21 PGED2/TDI/RP10/CN16/PMD2/RB10
- 22 PGEC2/TMS/RP11/CN15/PMD1/RB11
- 23 AN12/DAC1RP/RP12/CN14/PMD0/RB12
- 24 AN11/DAC1RN/RP13/CN13/PMRD/RB13
- 25 AN10/DAC1LP/RTCC/RP14/CN12/PMWR/RB14
- 26 AN9/DAC1LN/RP15/CN11/PMCS1/RB15

